

Installation & Activation Guide



LepideAuditor Suite

**© Lepide Software Private Limited, All Rights Reserved**

This User Guide and documentation is copyright of Lepide Software Private Limited, with all rights reserved under the copyright laws. This user guide cannot be reproduced in any form without the prior written permission of Lepide Software Private Limited. No Patent Liability is assumed, however, with respect to the use of the information contained herein.

Warranty Disclaimers and Liability Limitation

LepideAuditor Suite, and any and all accompanying software, files, data and materials, are distributed and provided AS IS and with no warranties of any kind, whether expressed or implied. In particular, there is no warranty for any harm, destruction; impairment caused to the system where LepideAuditor Suite is installed or where its setup installer file is downloaded. You acknowledge that good data processing procedure dictates that any program, including LepideAuditor Suite, must be thoroughly tested with non-critical data before there is any reliance on it, and you hereby assume the entire risk of all use of the copies of LepideAuditor Suite covered by this License. This disclaimer of warranty constitutes an essential part of this License.

In addition, in no event does Lepide Software Private Limited authorize you or anyone else to use LepideAuditor Suite in applications or systems where LepideAuditor Suite failure to perform can reasonably be expected to result in a significant physical injury, or in loss of life. Any such use is entirely at your own risk, and you agree to hold Lepide Software Private Limited harmless from any and all claims or losses relating to such unauthorized use.

Trademarks

LepideAuditor Suite, LAS, LepideAuditor for Active Directory, LAAD, LepideAuditor for Group Policy Object, LAGPO, LepideAuditor for Exchange Server, and LAES are copyright works of Lepide Software Private Limited.

Windows 95[®], Windows 98[®], Windows ME[®], Windows XP[®], Windows Vista[®], Windows 7[®], Windows 8[®], Windows NT[®], Windows 2000 Server[®], Windows 2000 Advanced Server[®], Windows Server 2003[®], Windows Server 2003 R2[®], Windows Server 2008[®], Windows Server 2008 R2[®], Windows Server 2012[®], Exchange Server 2003[®], Exchange Server 2007[®], Exchange Server 2010[®], Exchange Server 2013[®], .NET Framework 4.0, SQL Server 2005[®], SQL Server 2008[®], SQL Server 2008 R2[®], SQL Server 2012[®], SQL Server 2014[®], SQL Server 2005 Express Edition[®], SQL Server 2008 Express[®], SQL Server 2008 R2 Express[®], SQL Server 2012 Express[®], and SQL Server 2014 Express[®] are registered trademarks of Microsoft Corporation.

Intel and Pentium are the registered trademarks of Intel Corporation.

Contact Information

Email: sales@lepide.com

Website: <http://www.lepide.com>



Table of Contents

1. Introduction	4
1.1 Purpose of this Document.....	4
1.2 Points of Contact.....	4
2. System Requirements	5
2.1 Minimum System Requirement.....	5
2.2 Required Operating Systems Platforms.....	5
2.3 Supported Windows Servers	5
2.4 Supported Exchange Servers.....	5
2.5 Prerequisites.....	6
3. Installing LepideAuditor Suite	7
4. Uninstalling LepideAuditor Suite	13
4.1: Uninstalling LepideAuditor Suite from Windows Start Menu.....	13
4.2: Uninstalling LepideAuditor Suite from Control Panel	14
5. Activating the License.....	17
5.1: License Notification	17
5.2: Types of Licenses.....	18
5.3: Generating License Request File.....	18
5.4: Applying the License.....	20



1. Introduction

Welcome to the Installation and Activation Guide of LepideAuditor Suite

In this guide, we have covered the installation, uninstallation, and activation of LepideAuditor Suite.

1.1 Purpose of this Document

The purpose of this document is to guide you through the process of downloading the setup installer file, installation steps, un-installation procedure, and the way to activate the Software.

1.2 Points of Contact

For software related queries, you can contact us via email or phone.

Helpline: +1-800-814-0578

Send an Email:

General Queries: contact@lepide.com

Sales: sales@lepide.com

Technical Support: support@lepide.com



2. System Requirements

Before you start installing the LepideAuditor Suite, make sure that your computer meets the following requirements.

2.1 Minimum System Requirement

- Dual Core Processor or higher Processor
- Minimum 4 GB RAM
- 500 MB free space for the software installation
- Enough disk space to generate and save reports

2.2 Required Operating Systems

One of the following Windows operating systems (32/64-bit version) is required.

- Windows XP
- Windows Vista
- Windows 7
- Windows 8
- Windows Server 2003
- Windows Server 2003 R2
- Windows Server 2008
- Windows Server 2008 R2
- Windows Server 2012
- Windows Server 2012 R2

2.3 Supported Windows Servers

- Windows Server 2003
- Windows Server 2003 R2
- Windows Server 2008
- Windows Server 2008 R2
- Windows Server 2012
- Windows Server 2012 R2

2.4 Supported Exchange Servers

- Exchange Server 2003
- Exchange Server 2007
- Exchange Server 2010
- Exchange Server 2013



2.5 Prerequisites

- .NET Framework 4.0 or later
- Any of the following SQL Servers.
 - SQL Server 2005
 - SQL Server 2008
 - SQL Server 2008 R2
 - SQL Server 2012
 - SQL Server 2014
 - SQL Server 2005 Express Edition
 - SQL Server 2008 Express
 - SQL Server 2008 R2 Express
 - SQL Server 2012 Express
 - SQL Server 2014 Express



3. Installing LepideAuditor Suite

Before installing this software, make sure that the installer file is available on your computer. If the file is not available on your computer, then you can download the file from <http://www.lepide.com/lepideauditor/download.html>. In addition, please make sure your computer meets the system requirements for this software.

After you have downloaded the installer file, execute the following steps to install LepideAuditor Suite.

1. Double click the downloaded installer file to start the installation.

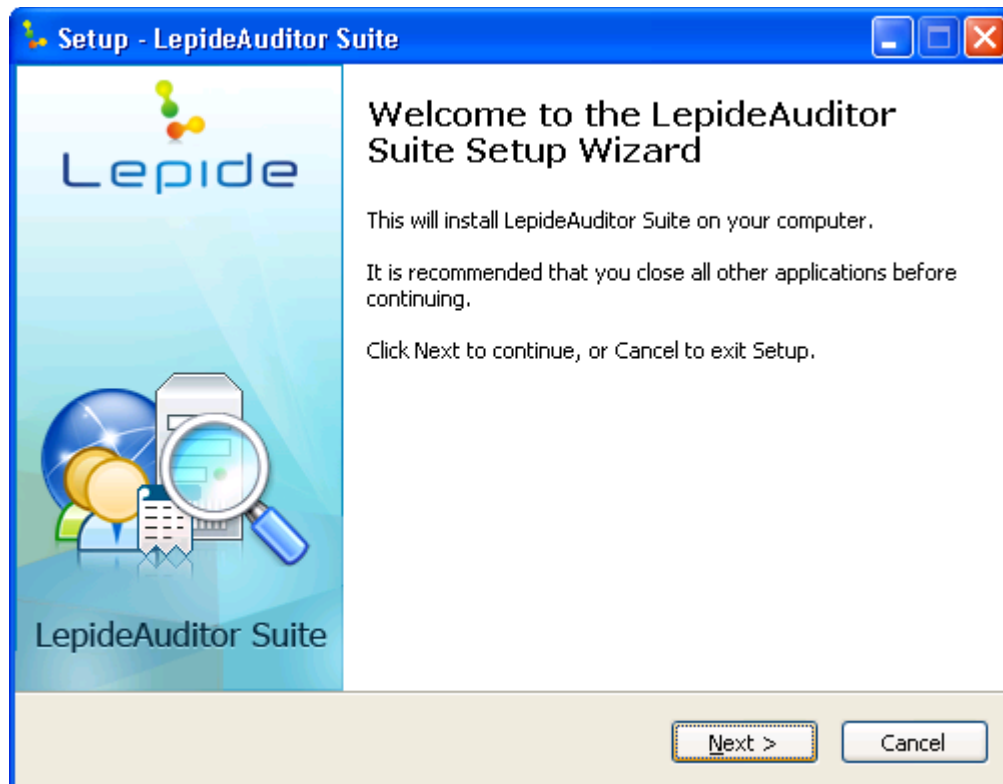


Figure 1: Starting the Installation

- Click "Next" button to proceed. This will display the following wizard.

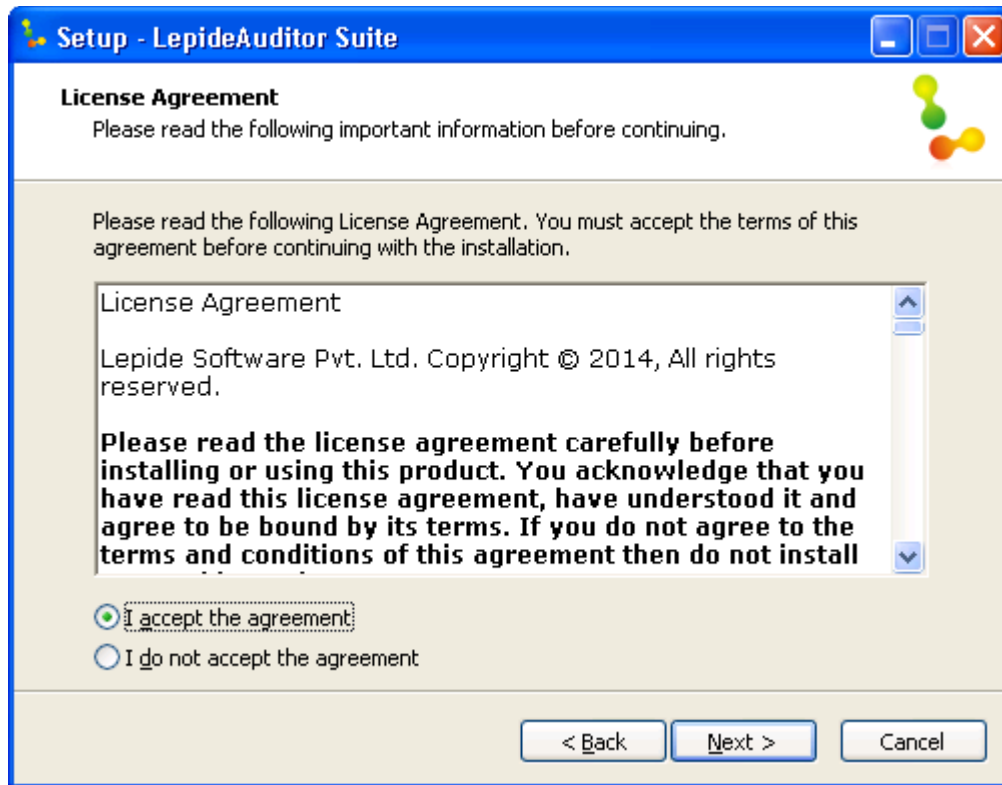


Figure 2: License Agreement

- It's recommended to read the license agreement carefully before installing the software.
- If you agree to the license agreement and want to continue the installation, then check "I accept the agreement" and click "Next" button.



- This will display the following dialog box, which allows you modifying the destination. The default installation location is **%ProgramFiles%\LepideAuditor Suite** for 32-bit and **%ProgramFiles(x86)%\LepideAuditor Suite** for 64-bit Windows OS.

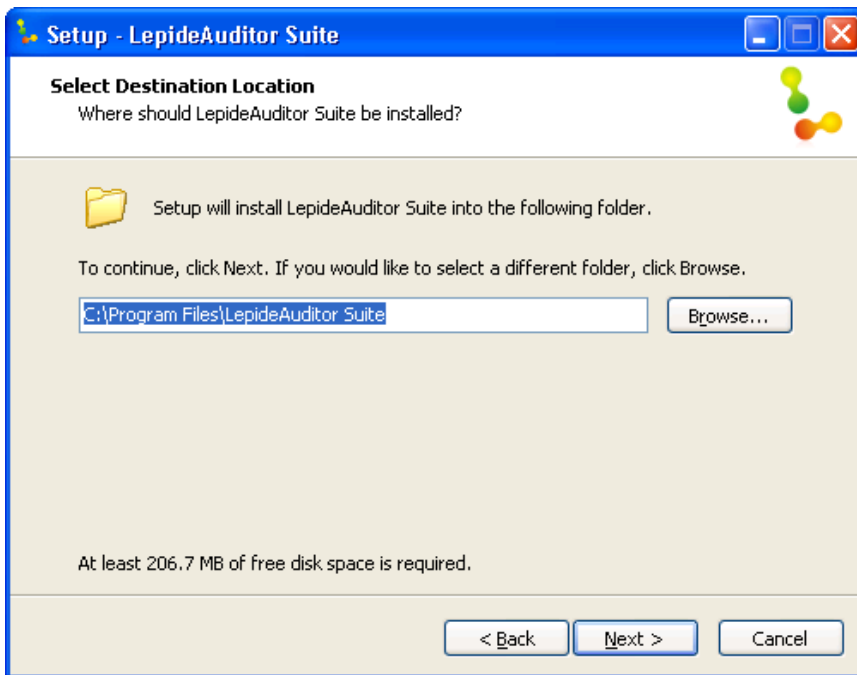


Figure 3: Change the Installation Location

- If you want to modify the installation location, then click "Browse" button and select the desired location.
- Click "Next" button to proceed further. Here, you can customize the location of the shortcuts folder in the Start Menu.

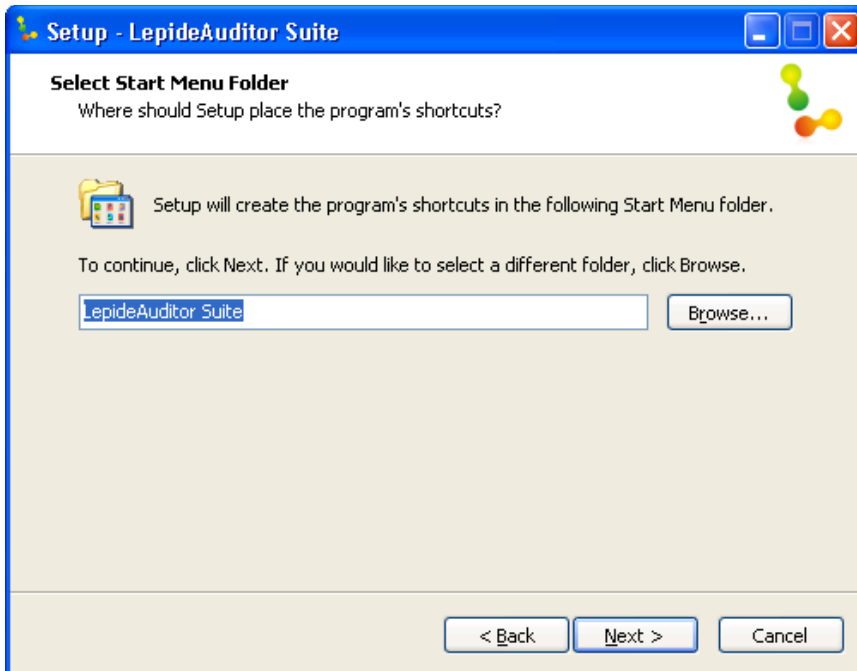


Figure 4: Option to modify the Shortcuts folder

- Click "Browse" button and select a different location to modify the location of the shortcuts folder in the Start Menu.
- Click "Next" button to use the default or customized shortcuts folder. This will display the following screen.

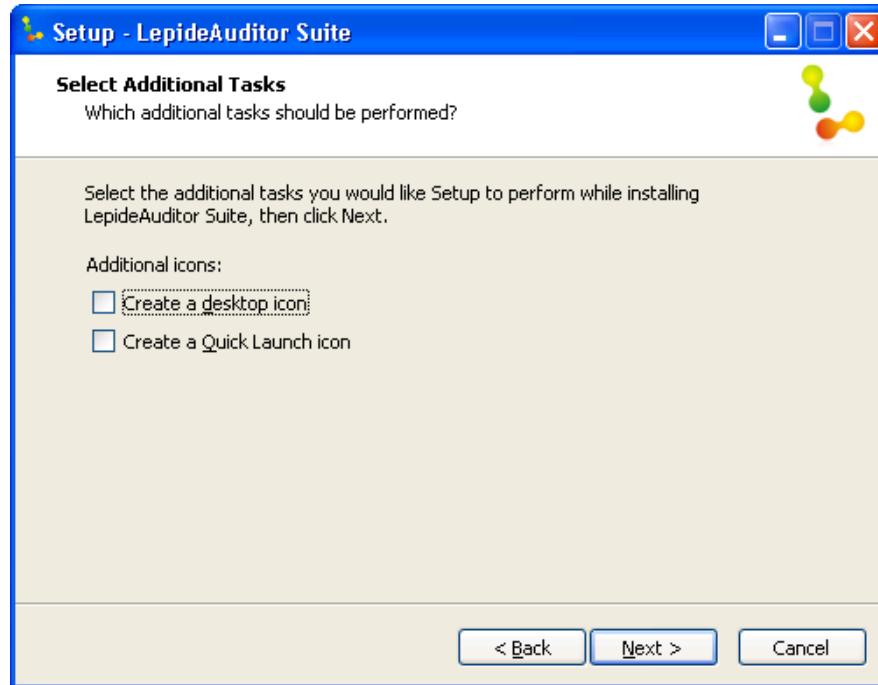


Figure 5: Perform Additional Tasks

- Check the boxes titled "Create a desktop icon" and/or "Create a Quick Launch icon", if you want.
- Click "Next" button to proceed further.

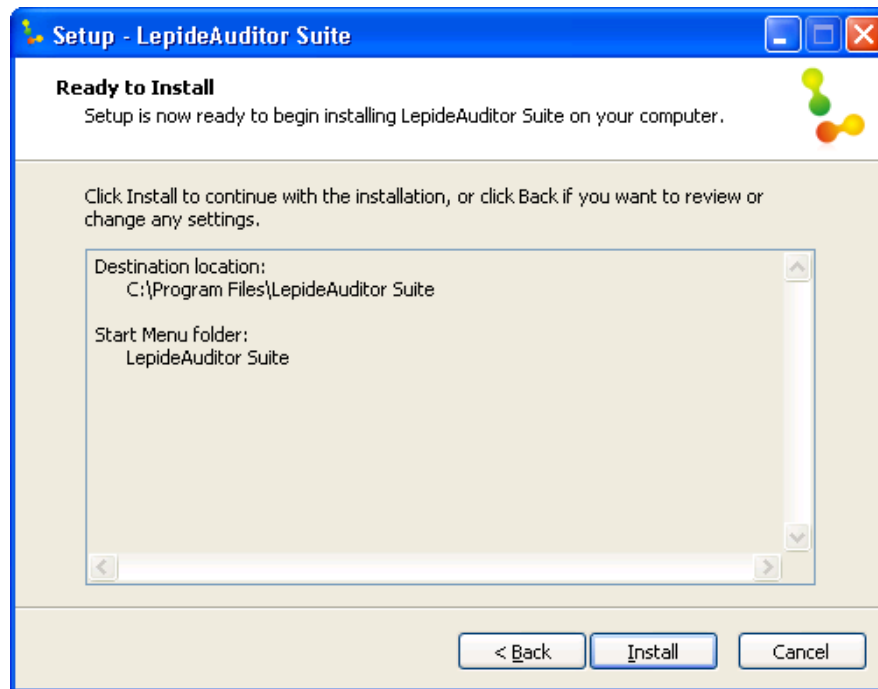


Figure 6: Software is now ready to install

12. Click "Install" button to begin the installation procedure.

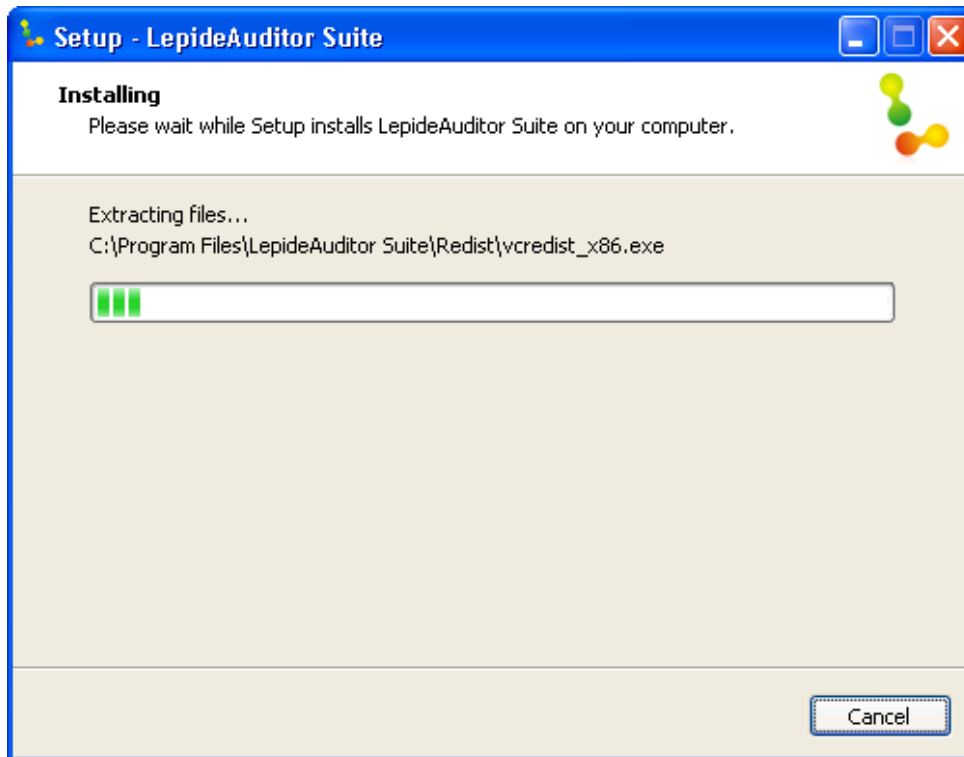


Figure 7: Software is being installed

13. When the installation process is completed successfully, you'll receive the following message.



Figure 8: Software is installed



14. Click the **Finish** button to complete the process. This will close the installation wizard and launch the software, if you have kept the option "Launch Lepide Auditor Suite" checked.

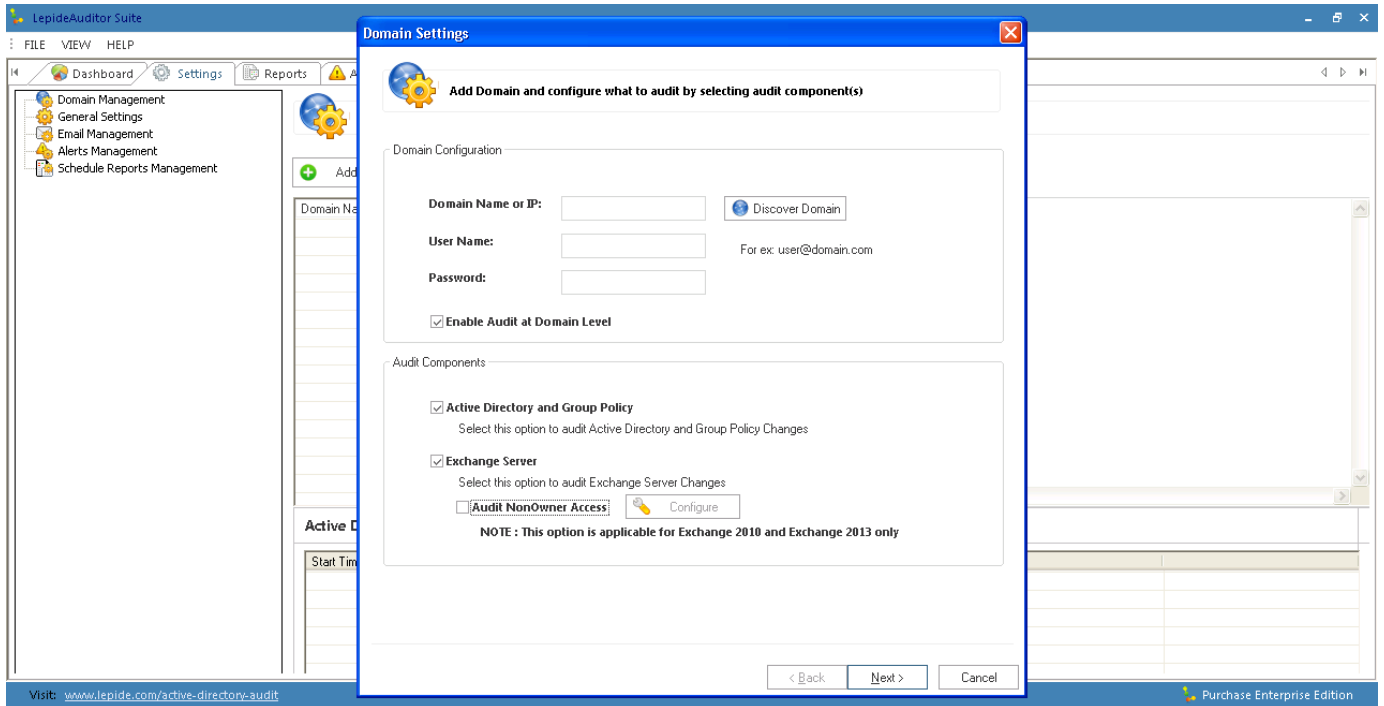


Figure 9: Welcome Screen

4. Uninstalling LepideAuditor Suite

There can be a situation when you need to uninstall the LepideAuditor Suite. Please make sure to close the software before uninstalling it.

The software can be uninstalled from your system in the following two ways:

- Uninstall through **Start Menu**
- Uninstall through **Control Panel**

4.1: Uninstalling LepideAuditor Suite from Windows Start Menu

To remove the LepideAuditor Suite Software from Start Menu follow the instructions below:

1. Click **Start > All Programs > LepideAuditor Suite > Uninstall LepideAuditor Suite**. A confirmation message appears to let you affirm the un-installation process.

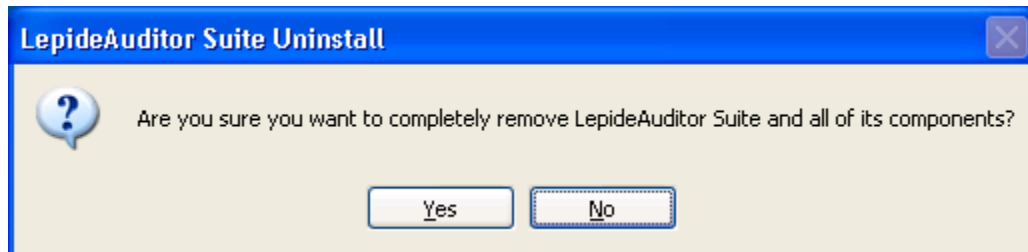


Figure 10: Warning to uninstall the software

2. Click the **Yes** button to uninstall the software. This will start the un-installation process.

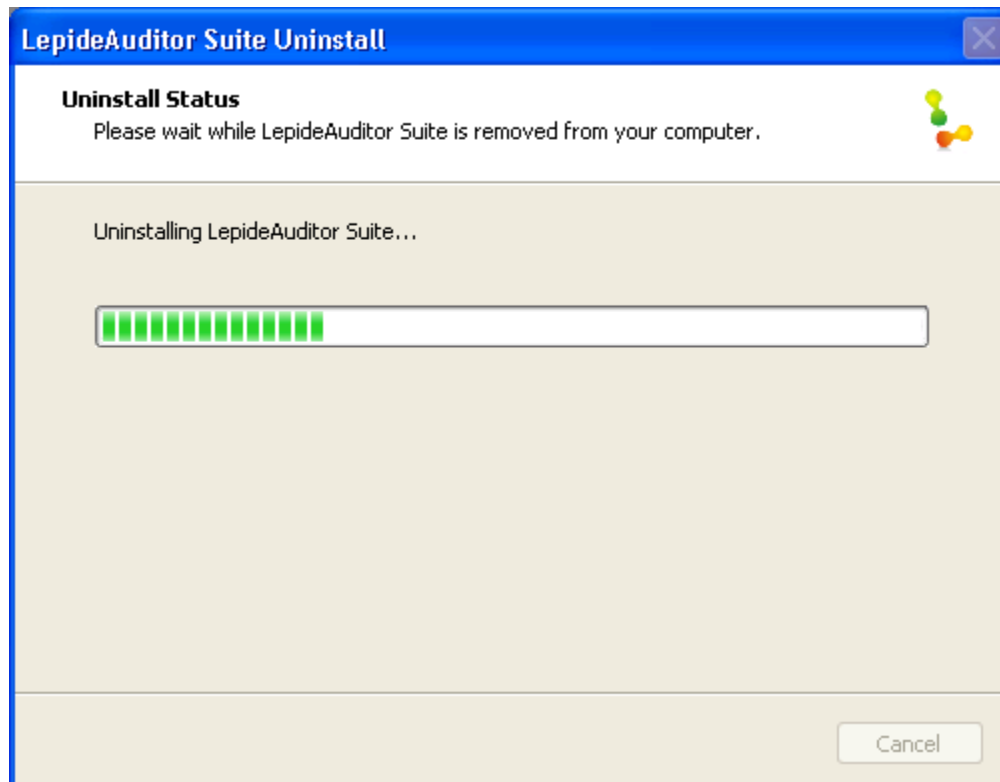


Figure 11: Uninstalling the software

- When the software is removed, you'll receive the following message box.

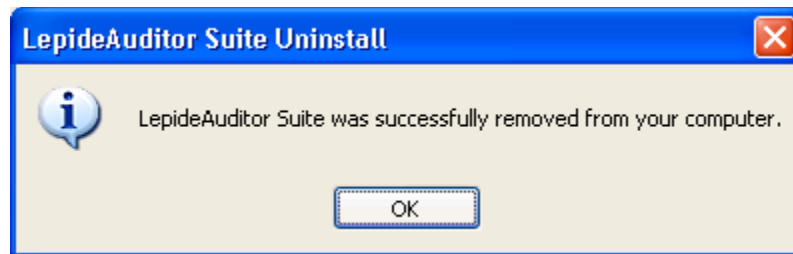


Figure 12: The software is finally uninstalled.

- Click the **OK** button to finish the process.

4.2: Uninstalling Lepide Auditor Suite from Control Panel

To remove the Lepide Auditor Suite Software from Control Panel, follow the steps below:

- Click Start -> Control Panel. The Control Panel window appears.
- Double click the Add or Remove Programs icon. A list of the programs installed on your computer appears.
- Select Lepide Auditor Suite and click the "**Remove**" button. A warning message before uninstalling the software appears on the screen.

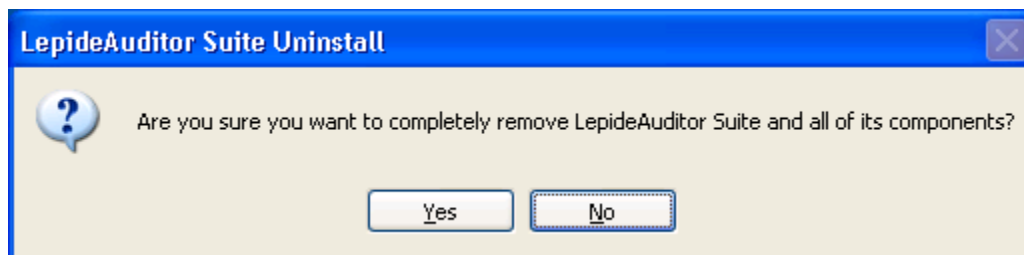


Figure 13: Warning to uninstall the software

- Click the “Yes” button to uninstall the software. The un-installation process will be started.

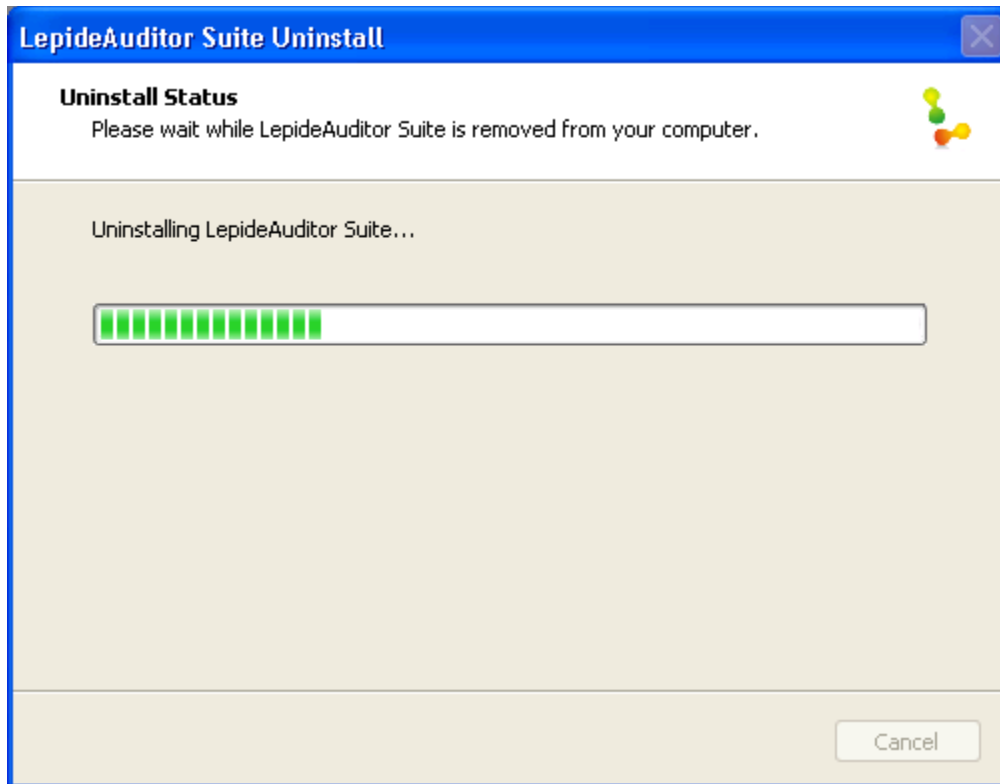


Figure 14: Uninstalling the Software

- The following message box will confirm the successful un-installation of the software.

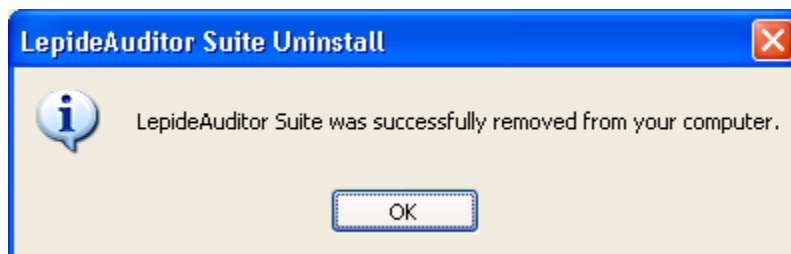


Figure 15: The software is uninstalled.

- Click the **OK** button to complete the un-installation process.

After following the above steps, LepideAuditor Suite will be uninstalled successfully from your computer system.

By default, the software is configured to retain the license file, auditing for server, data of backup snapshots, and other settings in the program installation folder.



To remove the remaining elements, delete its program installation folder manually and then empty the Recycle Bin as well. Kindly don't remove this folder if you want to retain the license file and/or have to reinstall the same/upgraded version of the software.

- **%ProgramFiles%\LepideAuditor Suite** – for 32-bit OS
- **%ProgramFiles(x86)%\LepideAuditor Suite** – for 64-bit OS

Please note that deleting the above folder will also remove the snapshot data captured by the software and there is no way to recover them back. Please don't remove the installation folder in order to retain the auditing logs, license files, and other settings.

5. Activating the License

5.1: License Notification

Once you’ve installed the software, you have to add the domain that you want to audit. After adding the domain, the software will display a notification bar at the bottom asking for the license.

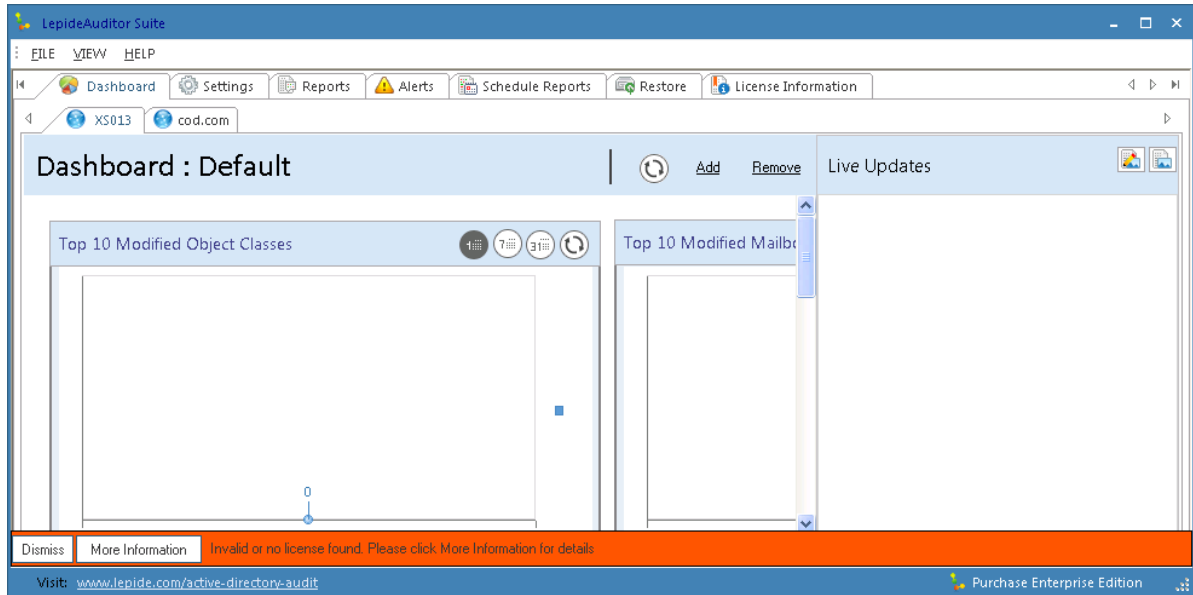


Figure 16: License Warning at the bottom

This license notification will flash until you add a license to the added domain. Click “More Information” button to know more about the license details. This will display the following dialog box.

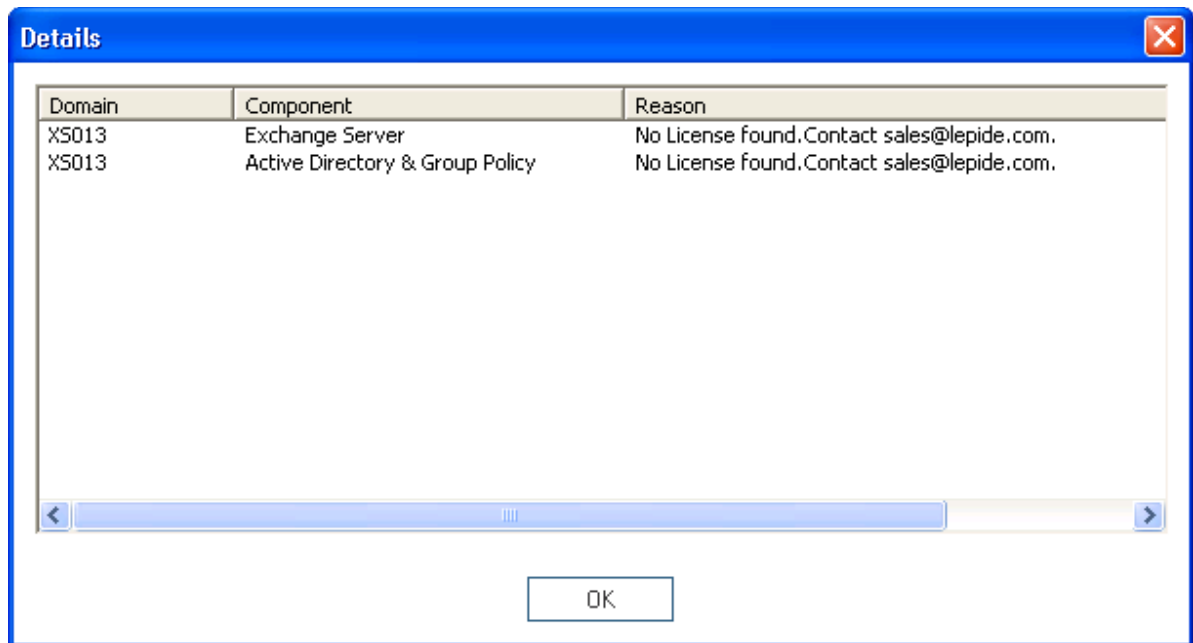


Figure 17: License Details for the newly added domain “XS013”

5.2: Types of Licenses

Lepide Software Pvt. Ltd. offers the following types of license for Lepide Auditor Suite. You've to buy the separate licenses for each Active Directory (includes Group Policy Objects) and Exchange Server.

1. **Trial Version:** The trial edition of the product will work just like the paid version; however, the software will remain active only for 15 days. You've to upgrade to either Perpetual or Subscription license after the expiry of this trial period.
2. **Subscription License:** The product will remain active only for the subscribed period. The license has to be renewed thereafter.
3. **Perpetual License:** The product will remain active for a lifetime. There is no time limitation.

5.3: Generating License Request File

You need to follow the below mentioned steps for generating a license request file.

1. Go to the "License Information Tab", which will display the list of all added servers in the left pane.
2. Select a server in the left panel, for which you want to add a license. This will show the License Information for that server in the Right Pane.

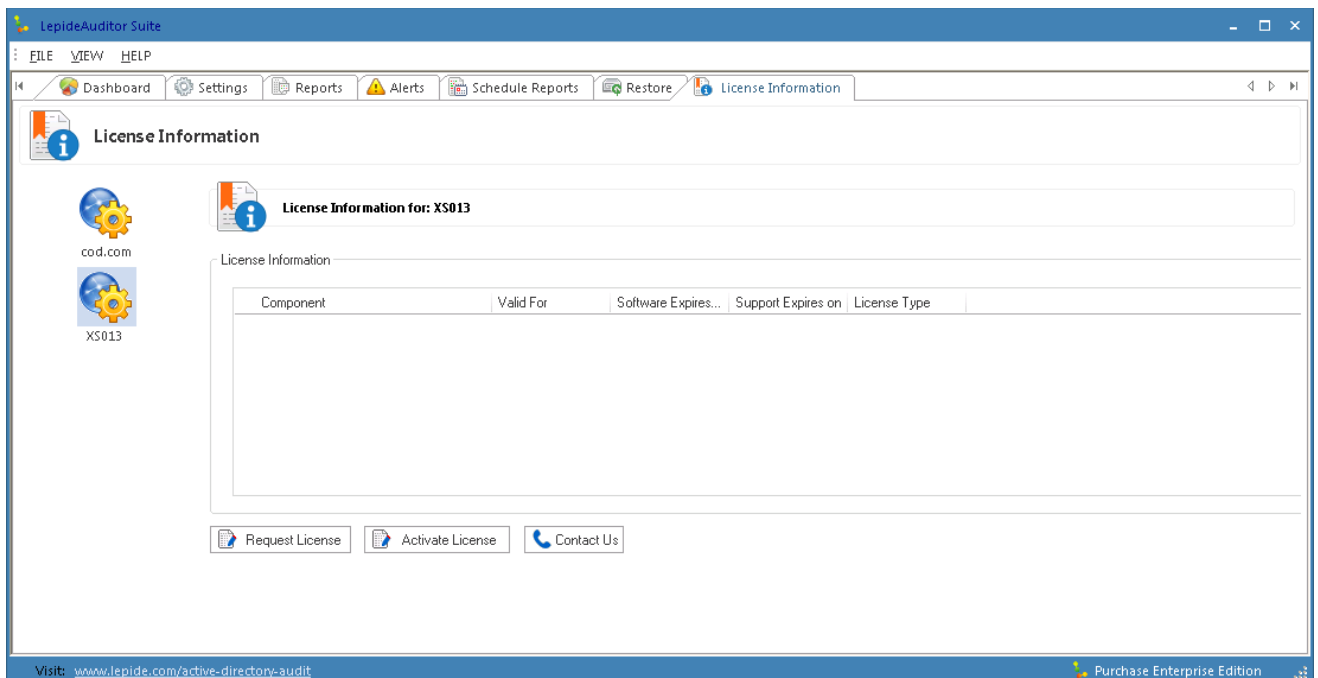



Figure 18: License Information Tab

- Click  button to generate a quote file for the selected server. It will display the following dialog box.

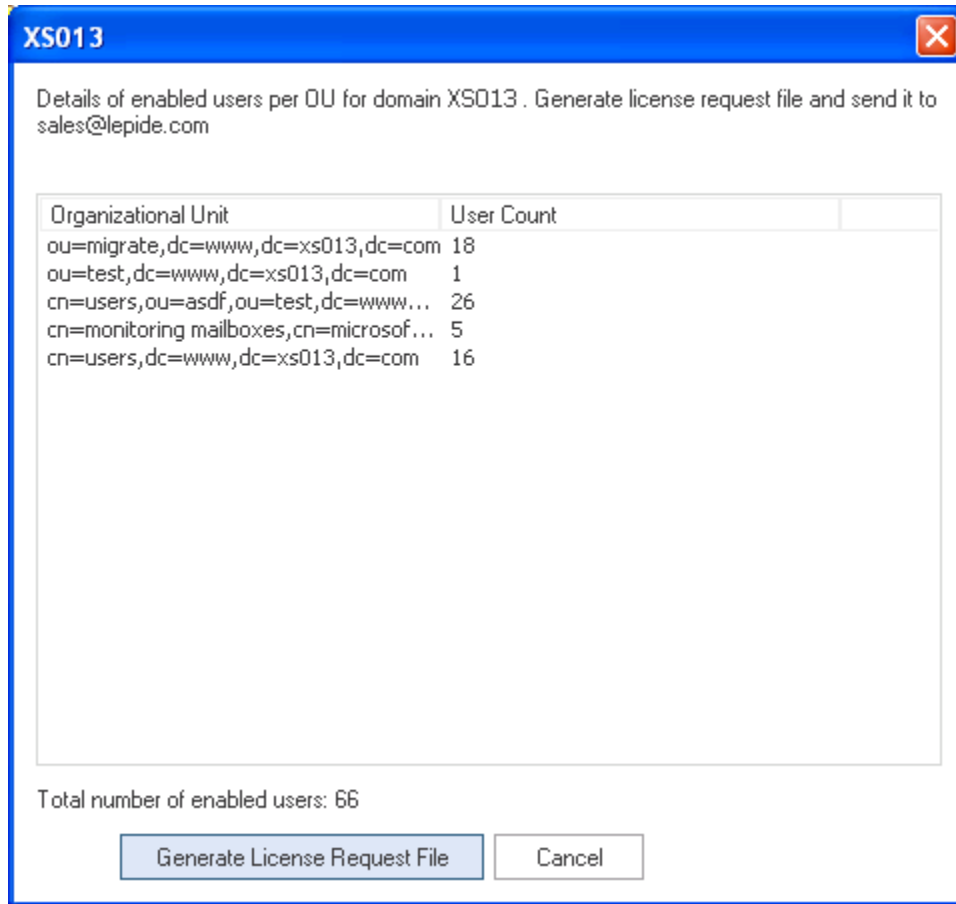



Figure 19: Get Quote Dialog box

- Click  button to generate the license request file. It will display the following message box.

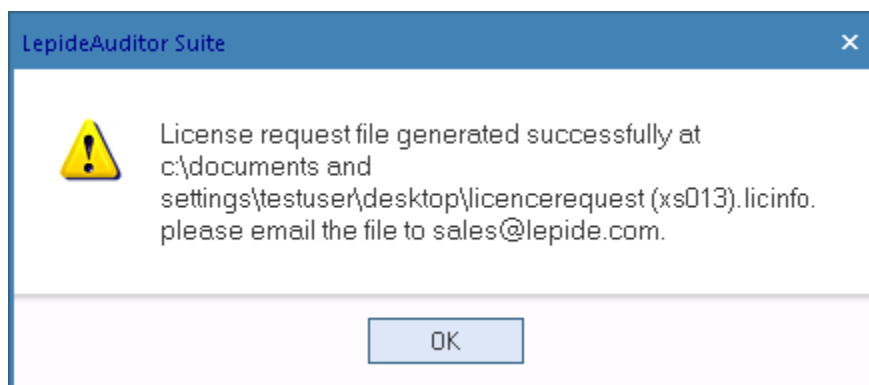



Figure 20: Message box to inform the generation of the License Request Information file




5. Click "OK" button. A file - **LicenceRequest (XS013).LicInfo** - will be generated and stored on the current users' desktop.

 Here, the bracket contains the name or IP Address of the server provided by the user while adding the server in the software.

6. Send this file through email to sales@lepide.com along with the type of license you need. The Free Trial version of the software is available for the first time users for a period of 15 days. You've to upgrade the license to Professional Edition after the expiration of this trial period.
7. Our Sales Team will revert back very soon with a License file. Store that file on the disk.

5.4: Applying the License

Follow the steps below to apply the received license.

1. At the License Information Tab, select the domain of which license you've to apply.
2. Click  Activate License button. This will display the following dialog box.

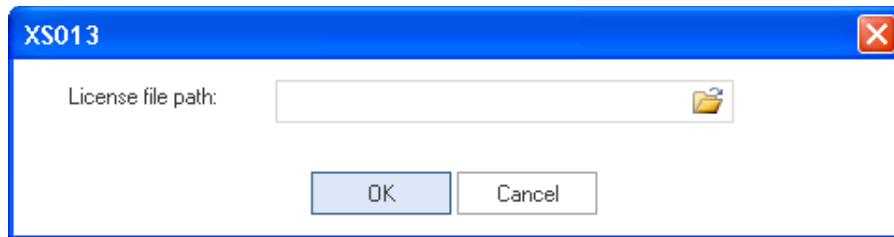



Figure 21: Activate License dialog box

3. Click  icon to select the license file. It will display the following box.

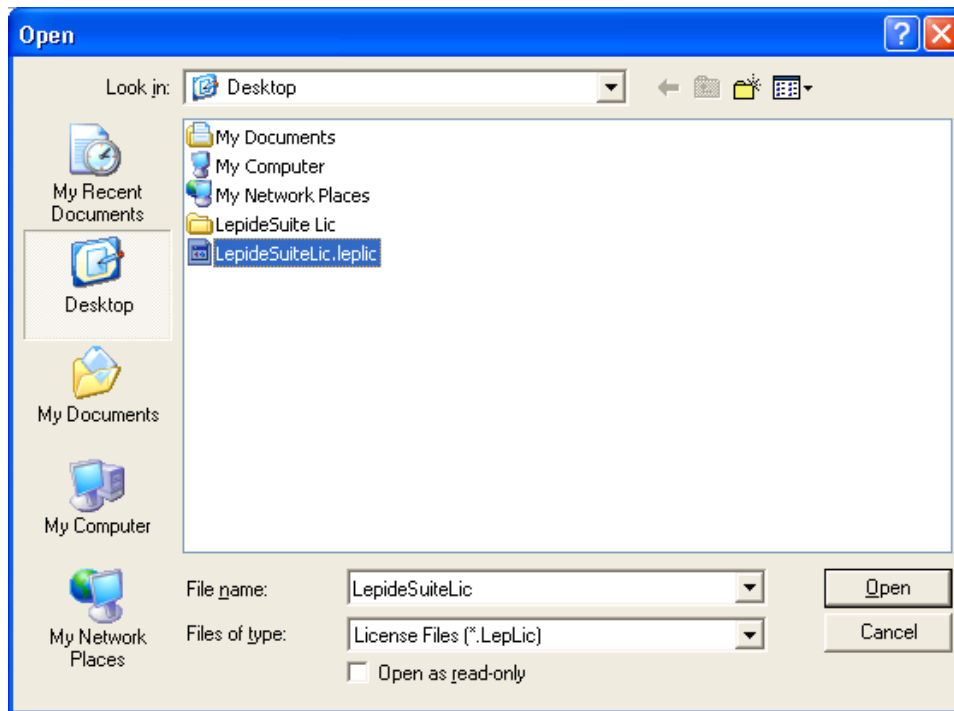


Figure 22: "Open" dialog box



4. Select the location, where you've stored the license file.
5. Select the file and click "Open" button. This will open the license file and returns to the previous dialog box.

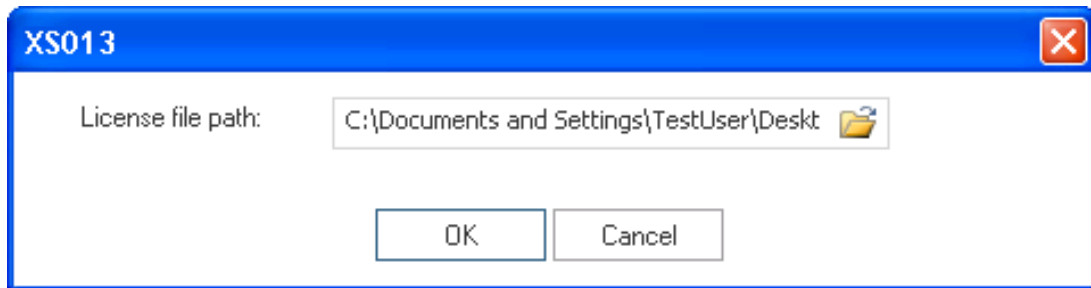


Figure 23: "Activate License" box now shows the selected file.

6. Click "OK" button. This will apply the license to the software and take you back to the License Information Tab.